

PHILIPS SERVICE

228 B



200—550 m
1000—2000 m



2398 Z = 5 Ω



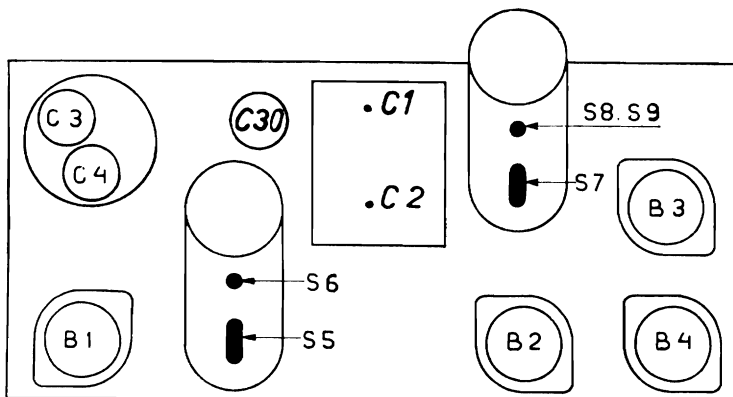
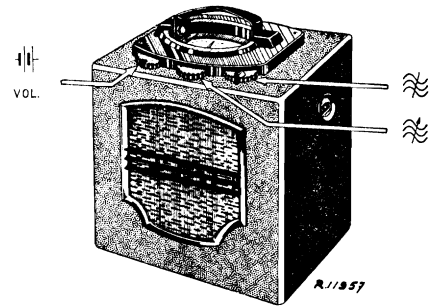
90V, 2V.

464 kc/s

8,5 mA, 0,53 A.

200—550 m I		200—550 m III		1000—2000 m III	
VOL.	max.	VOL.	max.	VOL.	max.
	C1, C2 200 m		C1, C2 +15°		C1, C2 +15°
	g4B1—47000X-0,1μF		1430 kc/s—200pF—Y		295kc/s—33000pF—Y
	μF—		C3, C30 max.		C4 max.
	464 kc/s-33000 pF-g4B1				
	S8/S9, S7,				
	S6, S5 max.				
	g4B1-47000Ω-0,1 μF				

15° 09 992 44.0



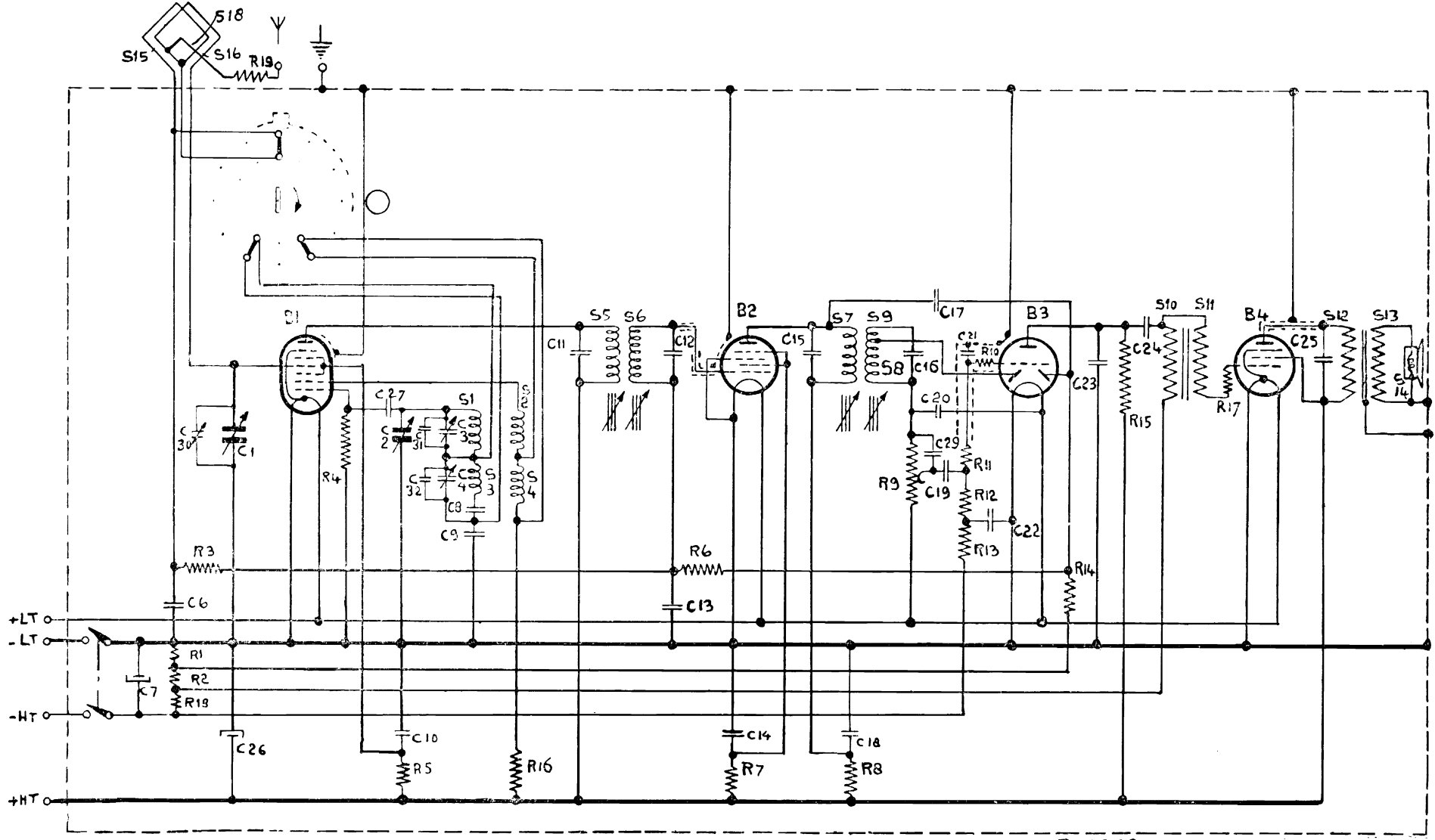
R 11421

	B1	B2	B3	B4	
	KK2	KH1	KBC1	KL4	
Va	87	86	42	84	V
Vg2	82	30	—	87	V
Vg3+5	32	—	—	—	V
Ia	0,42	0,81	0,22	4	mA
Ig2	1,2	0,36	—	0,65	mA
Ig3+5	0,6	—	—	—	mA

R1	82 Ω	48 426 10/82E	C1	11-490 pF	28 212 39 0
R2	270 Ω	48 426 10/270E	C2	30 pF	—
R3	82000 Ω	48 426 10/82K	C3	30 pF	—
R4	47000 Ω	48 426 10/47K	C4	47000 pF	48 751 10/47K
R5	82000 Ω	48 426 10/82K	C6	25 μF	28 182 24.1
R6	1 MΩ	48 426 10/1M	C7	300 pF	48 429 01/300E
R7	0,15 MΩ	48 426 10/150K	C8	597 pF	48 429 01/597E
R8	1000 Ω	48 426 10/1K	C9	47000 pF	48 751 10/47K
R9	1 MΩ	49 500 22.0	C10	97 pF	—
R10	0,22 MΩ	48 426 10/220K	C11	91 pF	—
R11	0,22 MΩ	48 426 10/220K	C12	47000 pF	48 751 10/47K
R12	1 MΩ	48 426 10/1M	C13	10000 pF	48 751 10/10K
R13	0,47 MΩ	48 426 10/470K	C14	97 pF	—
R14	1 MΩ	48 426 10/1M	C15	103 pF	—
R15	0,22 MΩ	48 426 10/220K	C16	10 pF	48 406 99/10E
R16	2700 Ω	48 426 10/2K7	C17	10000 pF	48 751 10/10K
R17	0,1 MΩ	48 426 10/100K	C18	47 pF	48 406 10/47E
R18	33 Ω	48 426 10/33E	C19	4700 pF	48 751 10/4K7
R19	1000 Ω	48 426 10/1K	C20	47 pF	48 406 10/47E
			C21	100 pF	48 406 10/100E
			C22	47000 pF	48 751 10/47K
			C23	1000 pF	48 429 10/1K
			C24	0.27 μF	48 751 10/270K
			C25	6800 pF	48 750 10/6K8
			C26	12½ + 12½ μF	48 317 09/
				12½ + 12½	
			C27	100 pF	48 406 10/100E
			C29	47 pF	48 406 10/47E
			C30	2½ - 30 pF	28 212 45.3
			C31	33 pF	48 406 10/33E
			C32	136 pF	48 429 02/136E

S1, S2, S3, S4, C3, C4	A1 035 41.1	S12, S13	A1 080 62.1
S5, S6, C11, C12	28 573 73.1	S14	49 981 00.0
S7, S8, S9, C15, C16	28 573 35.1*	S15, S16, S17, S18	—
S10, S11	28 536 74.0		

S:	15, 16, 18.	1, 2, 3, 4,	5, 6,	7, 8, 9,	10, 11,	12, 13, 14.				
C:	7, 6, 30, 1, 26,	27, 31, 32, 2, 10, 3, 4, 8, 9,	11, 12, 13, 14,	15, 16, 17, 18,	29, 19, 20, 21, 22,	23, 24,	25,			
R:	18, 1, 2, 3, 10,	4,	5,	16,	6, 7,	8,	9,	10, 11, 12, 13,	14, 15,	17,



R11950

