

# PHILIPS SERVICE

# 656 U

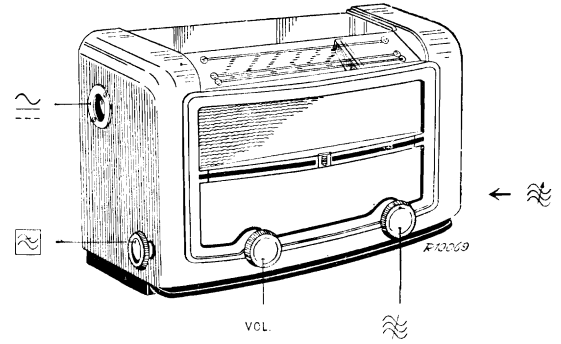
13,7—51 m  
175—585 m  
708—2000 m

9678/9678U-50 Z = 5 Ω

110 V, 125 V, 200 V, 225 V.

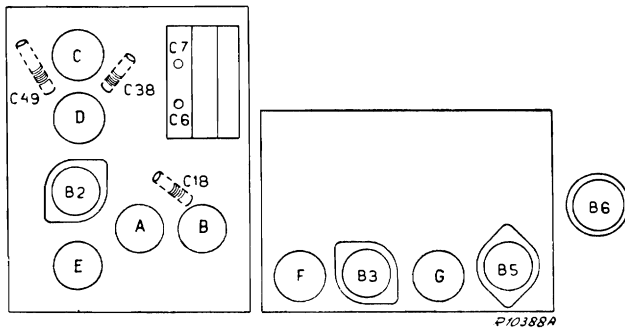
468 kc/s  
U-19 452 kc/s

45 W



175—585 m III	708—2000 m III	175—585 m V
VOL. max. C6, C7 + 15° 1650 kc/s — Y C38, C18 max.	C7 25 pF—aB2 160 kc/s — Y C6, C7 160 kc/s C7 VOL. max. C49 max.	VOL. max. 1154 kc/s — Y C6, C7 1154 kc/s 260 m
U-19		
175—585 m II		
VOL. max. C6, C7 max. 452 kc/s — Y S100 min.		

15° 09 992 44.0



R1	1200 Ω	49 362 74.0	C1	50 μF/	49 031 09.3
R11	0,5 MΩ	49 470 30.0	C2	50 μF	28 212 06.2
R21	50000 Ω	49 470 49.0	C3	100 μF	28 185 68.1
R31	0,47 MΩ	48 425 10/470K	C6	11-490 pF/	28 212 52.0
R32	15000 Ω	48 426 10/15K	C7	11-490 pF/	48 406 99/6E8
R33	15000 Ω	48 426 10/15K	C14	6,8 pF	28 212 06.2
R41	22000 Ω	48 425 10/22K	C18	32 pF	48 406 10/22E
R42	0,1 MΩ	48 425 10/100K	C19	22 pF	48 406 10/18E
R43	47000 Ω	48 425 10/47K	C20	18 pF	28 212 06.2
R45	0,68 MΩ	48 425 10/680K	C38	32 pF	48 406 99/39E
R46	1,5 MΩ	48 426 10/1M5	C40	39 pF	48 406 01/450E
R47	0,82 MΩ	48 425 10/820K	C47	450 pF	48 406 01/485E
R48	0,82 MΩ	48 425 10/820K	(C47)	485 pF	28 212 08.2
R50	1,5 MΩ	48 426 10/1M5	C49	200 pF	—
R51	56000 Ω	48 425 10/56K	C51	103 pF	—
R60	100 Ω	48 425 10/100E	C52	103 pF	—
R61	330 Ω	48 467 10/330E	C61	103 pF	—
R62	180 Ω	—	C62	103 pF	—
R63	125 Ω	49 362 91.1	C81	3,3 pF	48 406 99/3E3
R64	1450 Ω	—	C82	82 pF	48 406 10/82E
R65	120 Ω	48 467 05/120E	C83	22000 pF	48 750 20/22K
R66	68 Ω	48 468 05/68E	C85	4700 pF	48 757 20/4K7
R81	47000 Ω	48 425 10/47K	C100	100 pF	48 406 10/100E
R82	0,1 MΩ	48 425 10/100K	C101	47000 pF	48 751 20/47K
R85	560 Ω	48 467 10/560E	C102	470 pF	48 406 20/470E
Z1	600 mA	08 140 43.1	C103	150 pF	48 406 10/150E
Z2	600 mA	08 140 43.1	C104	47 pF	48 406 20/47E
			C106	1000 pF	48 757 20/1K
			C107	4700 pF	48 757 20/4K7
			C108	47 pF	48 406 10/47E
			C117	120 pF	48 406 10/120E
			C120	90 pF	48 406 10/90E
			C121	47000 pF	48 751 20/47K
			C122	47000 pF	48 750 20/47K
			C123	10000 pF	48 751 20/10K
			C126	4700 pF	48 757 20/4K7
			C127	2200 pF	48 751 20/2K2
			C128	47000 pF	48 750 20/47K
			C128	0,18 μF	48 751 10/180K
			C130	0,1 μF	48 757 20/100K
			C131	22000 pF	49 126 50
			C132	4700 pF	48 752 20/4K7
			(C141)	4700 pF	48 757 20/4K7
			(C140)	106 pF	—

220 V ~				
	B2	B3	B5	B6
	UCH 21	UCH 21	UBL 21	UY1 N
Va	aT 95 aH 135	aT 45 aH 135	150	V
Vg2(4)	80	85	135	V
Ia	aT 2,4 aH 2	aT 0,6 aH 3,5	40	mA
Ig2(4)	4	2,5	5,5	mA

S13, S14	A1 038 27.0	S71, S72, S73	A1 151 17.0
S17, S18, S19, S20	A1 037 16.1	S74, S75	A1 000 34.0
S33, S34, S100	A1 038 33.0	S76	49 981 04.0
S37, S38, S39, S40	A1 037 17.4	S77	A1 001 88.3
S51, S52, C51	A1 037 33.1	S81, S82, S83	A1 081 99.1
S53, S54, S55, C52	A1 037 19.1 <sup>1)</sup>	S84, S85	A1 103 12.0
S61, S62, S63	A1 037 34.1	S100, S101, C140 <sup>1)</sup>	A3 140 02.1
S64, C61, C62	A1 037 18.1 <sup>1)</sup>		
	A1 037 61.1		
	A1 037 89.0 <sup>1)</sup>		

VCI = 160 V  
VC2 = 135 V

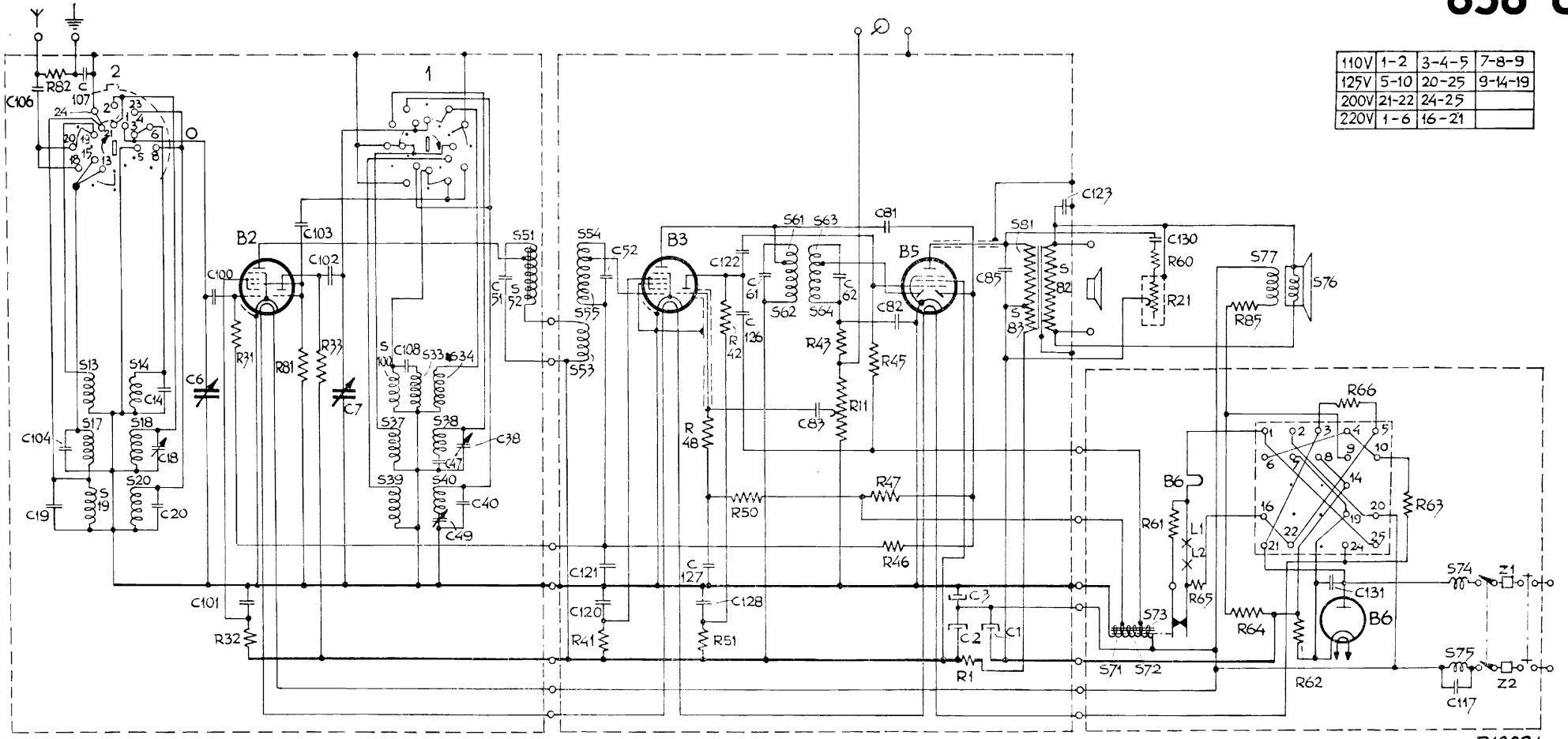
I S77 = 35 mA

1) 656U-19

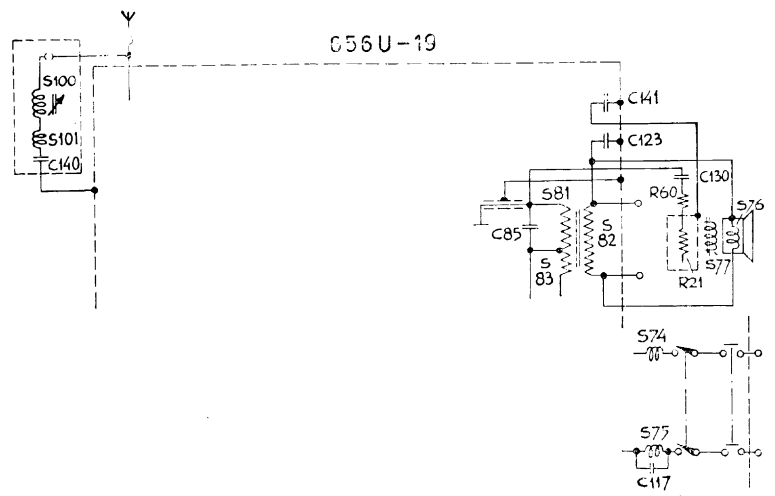
93 950 16.1

# 656 U

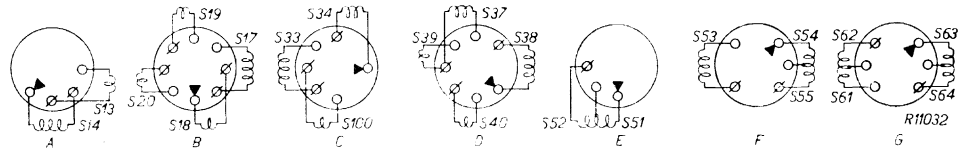
110V	1-2	3-4-5	7-8-9
125V	5-10	20-25	9-14-19
200V	21-22	24-25	
220V	1-6	16-21	



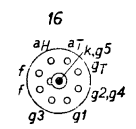
R10081



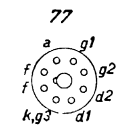
R10085



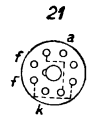
R11032



B2, 3



B5



B6