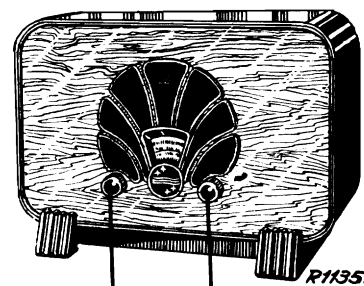


200—600 m  
850—2000 m

103—253 V

45 W.

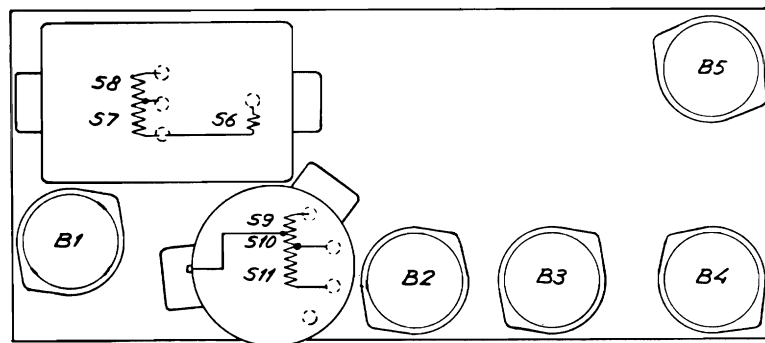
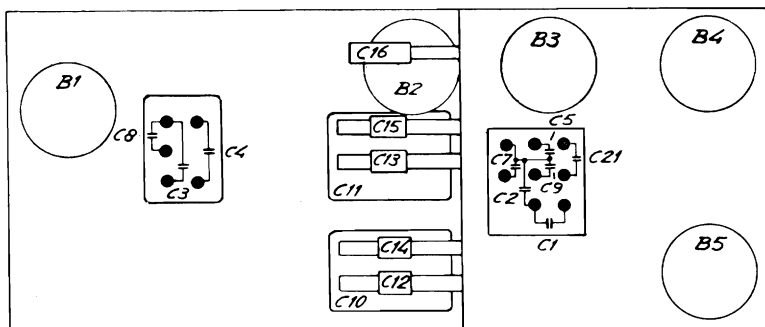


R11351

VOL.

200—600 m	200—600 m	850—2000 m
VOL. max. 225 m—200 pF— C10, C11 225 m. C13 max.	VOL. max. 225 m—200 pF— C10, C11 225 m 225 m	VOL. max. 1000 m—200 pF— C10, C11 1600 m C15 max.

R1	47000 Ω	48 427 10/47K	C1	3 μF	
R2	0,1 MΩ	48 427 10/100K	C2	2,5 μF	
R3	8200 Ω	48 426 10/8K2	C5	1 μF	25 114 06.0
R4	13000 Ω	48 427 10/1K8	C7	0,5 μF	
R6	820 Ω	25 718 90.0	C9	0,5 μF	
R7	47 Ω	48 426 10/47E	C21	0,1 μF	
R8	0,1 MΩ	48 425 10/100K	Ce	0,5 μF	25 114 07.0
R9	0,22 MΩ	48 425 10/220K	C4	0,5 μF	
R10	680 Ω	48 427 10/680E	C8	0,5 μF	
R11	1 MΩ	48 425 10/1M	C10	430 pF	25 828 27.0*
R12	0,22 MΩ	48 425 10/220K	C11	430 pF	
			C12	20 pF	49 005 05.2
			C13	30 pF	28 212 36.4
			C14	30 pF	28 212 36.4
			C15	30 pF	28 212 36.4
			C16	20 pF	48 429 10/20E
			C17	640 pF	48 429 10/640E
			C18	800 pF	48 429 10/800E
			C20	8200 pF	48 751 10/8K2
			C21	8200 pF	48 751 10/8K2
			C22	20 pF	48 429 10/20E
			C23	3300 pF	48 751 10/5K3
			C24	125 pF	48 429 10/125E
			C26	100 pF	48 429 10/100E



R11401

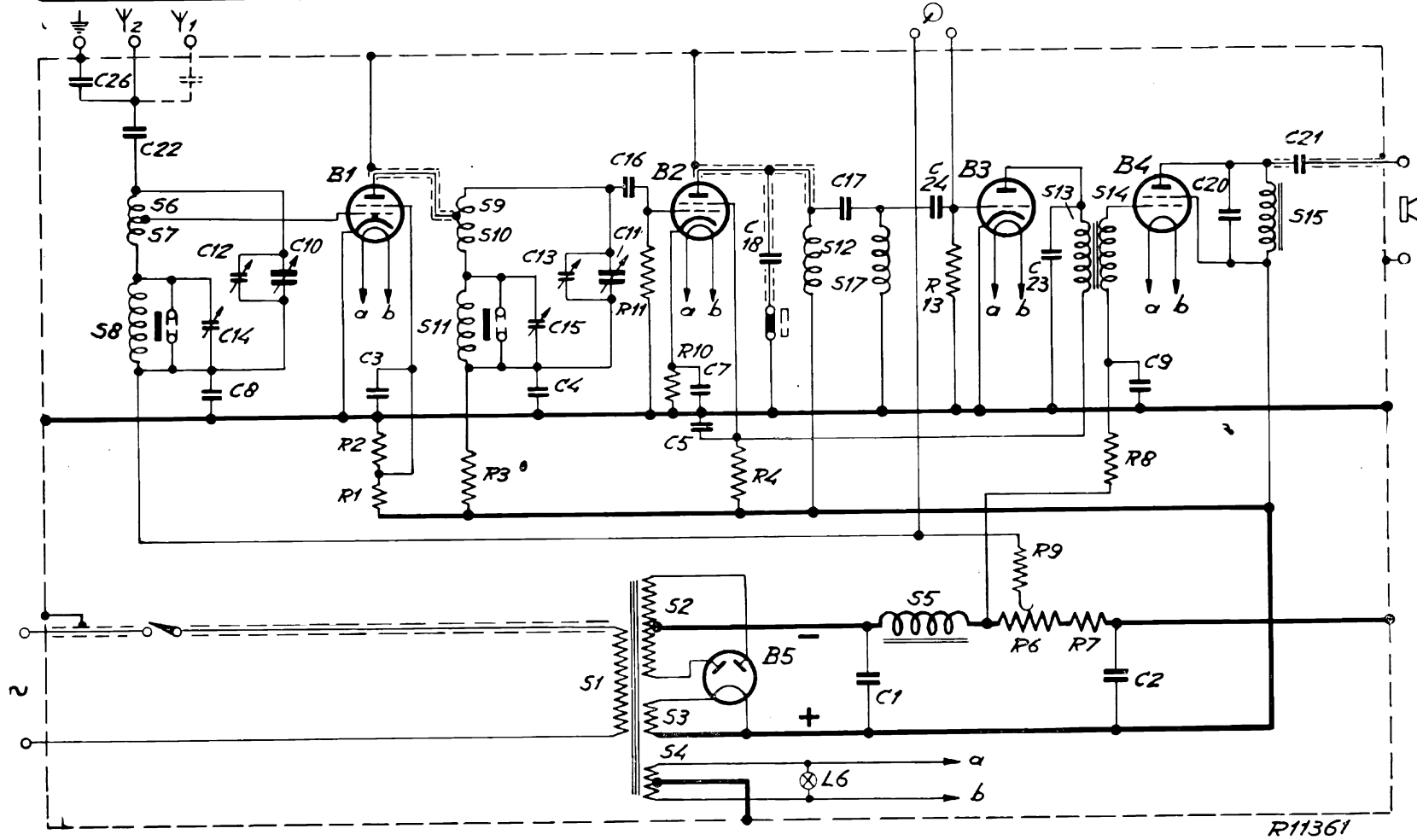
	B1	B2	B3	B4	B5	
	E 462	E 462	E 42R	C 453	1823	
Va	160	155	75	150	—	V
Vg2	100	85	—	170	—	V
Ia	3	2	5	15,5	—	mA

S1, S2, S3, S4	25 648 37.0	S13, S14	—
S6, S7, S8	—	S15	—
S9, S10, S11	—	S17	25 727 99.0
S12	25 728 44.0*		

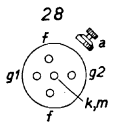
VC2 = 170 V.

Copyright  
N.V. Philips Gloeilampenfabrieken,  
Eindhoven  
Imprimé en Hollande

S:	8,6,7	11,9,10	1	2,3,4	12,17	5	13,14	15
C:	26,22	14,8,12,10	3	15,4,13,11,16	5,7,18	17,1	24	23,2,9,20,21
R:		1,2	3	11,10,4		13	6,9,7,8	

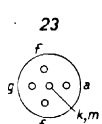


B1 B2



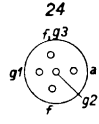
E428

B3



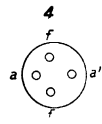
E428

B4



C453

B5



1823

R11361