

200—550 m

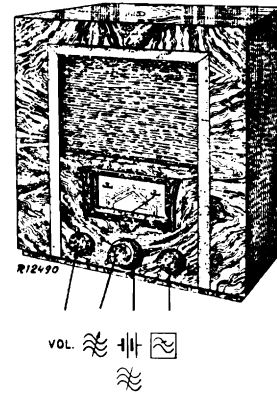
800—1900 m

2315 Z = 5 Ω

135 V

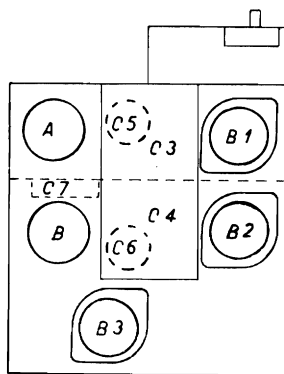
— 12 V
.2 V

200—550 m	III
VOL. max	
1333 kc/s —	Y I
C3, C4 150°	
C7 + 10°	
C5, C6 max	



VOL. III

1936/37



R 12545

R1	10000 Ω	—	C2	0,1 μF	48 750 10/100K
R2	4700 Ω	48 551 10/470E	C3	11-450 pF	—
R4	2,2 MΩ	48 427 10/2M2	C4	11-450 pF	—
R5	0,27 MΩ	48 427 10/270K	C5	0-30 pF	28 212 36.4
R6	0,1 MΩ	48 427 10/100K	C6	0-30 pF	28 211 35.0
R7	0,47 MΩ	48 551 10/470K	C7	200 pF	48 429 10/80E
R8	0,22 MΩ	48 551 10/220K	C8	80 pF	48 429 10/80E
R10	27000 Ω	48 425 10/27K	C9	0,1 μF	48 750 10/100K
R11	27000 Ω	48 425 10/27K	C10	0,1 μF	48 751 10/100K
R12	0,27 MΩ	48 425 10/270K	C11	15 pF	48 429 10/15E
R13	2,2 MΩ	48 427 10/2M2	C12	0,5 μF	28 160 63.0*
R14	1500 Ω	48 551 10/1K5	C17	2 μF	48 429 10/100E
			C13	100 pF	48 429 10/1K
			C14	1000 pF	48 429 10/3K2
			C15	3200 pF	48 429 10/1K6
			C16	1600 pF	48 429 10/2K
			C19	2000 pF	48 751 10/56K
			C20	56000 pF	48 429 10/80E
			C21	80 pF	48 429 10/100E
			C22	100 pF	—
S1, S2, S3, S4	28 564 27.0*				
S5, S6, S7, S8	28 565 85.0*				
S9	28 564 77.1*				
S10, S11	28 522 580				
S12	28 220 200				

	B1	B2	B3	
	KF2	KF1	C243N	
V _a	135	125	132	V
V _{g2}	135	115	135	V
—V _g	0,4—12	—	4,5	V
I _a	2,2—0	0,7	4,5—5,0	mA
I _{g2}	0,15—0	0,1	1,1	mA

I_a tot. = 7 mA I_f tot. = 0,65 A

823 B

