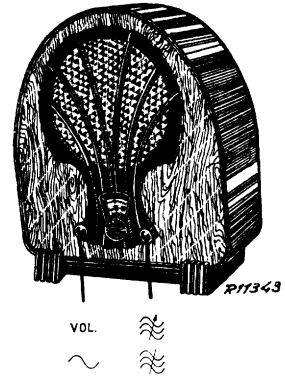


PHILIPS-SERVICE

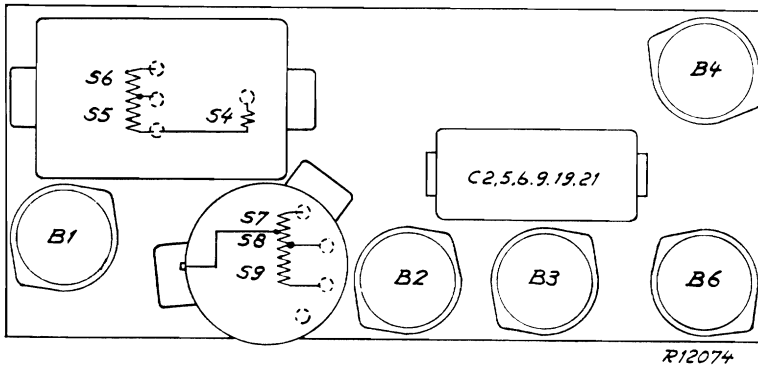
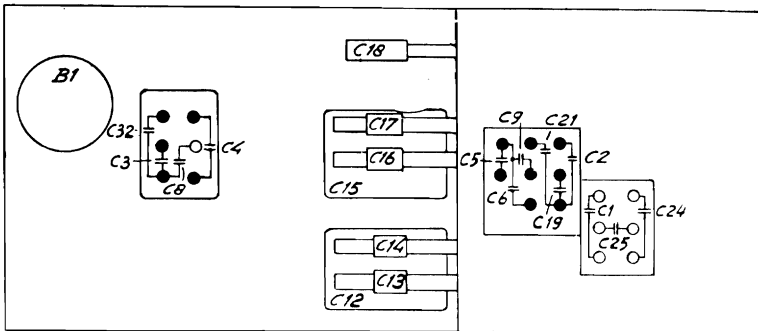
830 C

200—600 m
850—2000 m

2300
110—220V
55W (220V)



200—600 m	III	200—600 m	V	850—2000 m	III
VOL. max		1333 kc/s—200pF—Y		R2 — 2V	
1333 kc/s—200 pF—Y		C12, C15 max		300 kc/s—200 pF—Y	
C12, C15, max		225 m		C12, C15 1000 m	
C16, C12, C15 max				C17 max	
VOL. R2 — 2V					
C16, C12, C15 max					



R12074

110V

	B1	B2	B3	B4	B6	
	B2052T	B2052T	B2038	B2043	1926	
V _a	85	90	55	80		V
V _{g2}	40	65	—	85		V
I _a	1,2	1,5	2	7		mA

220V

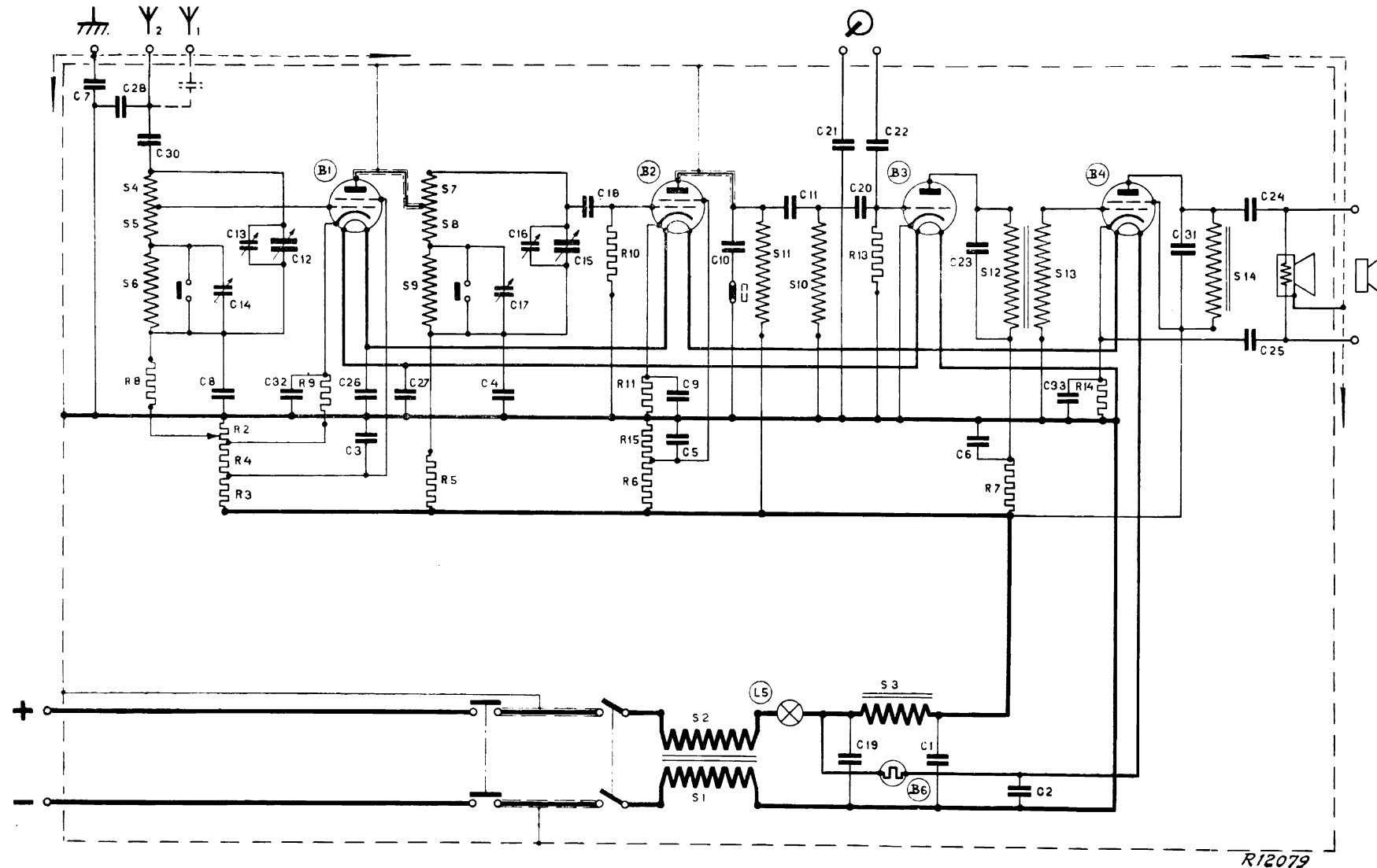
	B1	B2	B3	B4	B6	
	B2052T	B2052T	B2038	B2043	1928	
V _a	165	185	110	155		V
V _{g2}	85	145	—	175		V
I _a	3	3,5	5	18		mA

150V B6 = 1927

R2	3000 Ω	25 721 31.0	C1	2 μF	
R3	15000 Ω	48 427 10/15K	C24	0,2 μF	25 114 51.0*
R4	18000 Ω	48 427 10/18K	C25	0,2 μF	
R5	680 Ω	48 426 10/680E	C3	0,5 μF	
R6	15000 Ω	48 427 10/15K	C4	0,5 μF	25 114 52.0*
R7	15000 Ω	48 427 10/15K	C8	0,5 μF	
R8	0,22 MΩ	48 425 10/220K	C32	0,5 μF	
R9	470 Ω	48 426 10/470E	C2	2 μF	
R10	1 MΩ	48 426 10/1M	C5	0,5 μF	
R11	820 Ω	48 426 10/820E	C6	1 μF	25 114 53.1*
R13	0,22 MΩ	48 425 10/220K	C9	0,5 μF	
R14	680 Ω	48 426 10/680E	C19	4 μF	
R15	68000 Ω	48 427 10/68K	C21	0,5 μF	
			C7	10000 pF	48 752 10/10K
			C10	1000 pF	48 429 10/1K
			C11	640 pF	48 429 10/640E
			C13	0-30 pF	28 212 36.4
			C14	0-30 pF	28 212 36.4
			C12	8-430 pF	
			C15	8-430 pF	—
			C16	0-30 pF	28 212 36.4
			C17	0-30 pF	28 212 36.4
			C18	0-30 pF	28 212 36.4
			C20	125 pF	48 429 10/125E
			C22	22000 pF	48 750 10/22K
			C23	3200 pF	48 429 10/3K2
			C26	22000 pF	48 751 10/22K
			C27	22000 pF	48 751 10/22K
			C28	100 pF	48 429 10/100E
			C30	0-30 pF	28 212 36.4
			C31	8200 pF	48 752 10/8K2
			C33	22000 pF	48 750 10/22K

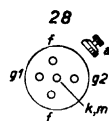
S1, S2
S3
S4, S5, S6
S7, S8, S9
S10
S11
S12, S13
S14

830 C



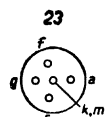
R12079

B1, B2



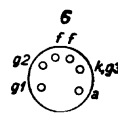
B2052T

B3



B2038

B4



B2043