

# PHILIPS-SERVICE

# V6A

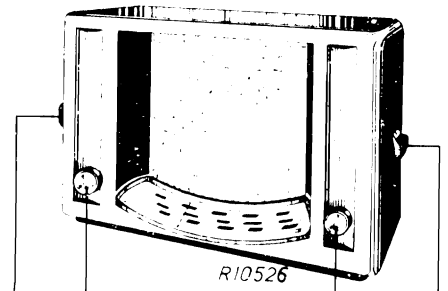
16,7—51 m  
198—585 m  
725—1975 m

9619 Z = 5 Ω

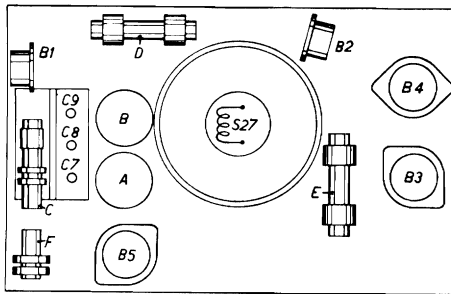
110, 125, 145 V,  
200, 220, 245 V.

128 kc/s

53 W



725—1975 m I	198—585 m III
VOL. max. C7, C8, C9 725 m 128 kc/s—32000 pF-g1B2 C24, C23 max. 128 kc/s—32000 pF-g4B1 C22, C21 max.	VOL. max. C7, C8, C9 min. 1450 kc/s—500 pF—Y C7, C8, C9 1450 kc/s C10, C11 max.
725—1975 m II	725—1975 m III
VOL. max. C7, C8, C9 1875 m 128 kc/s—500 pF—Y S5 min.	411 kc/s—500 pF—Y C12 max.



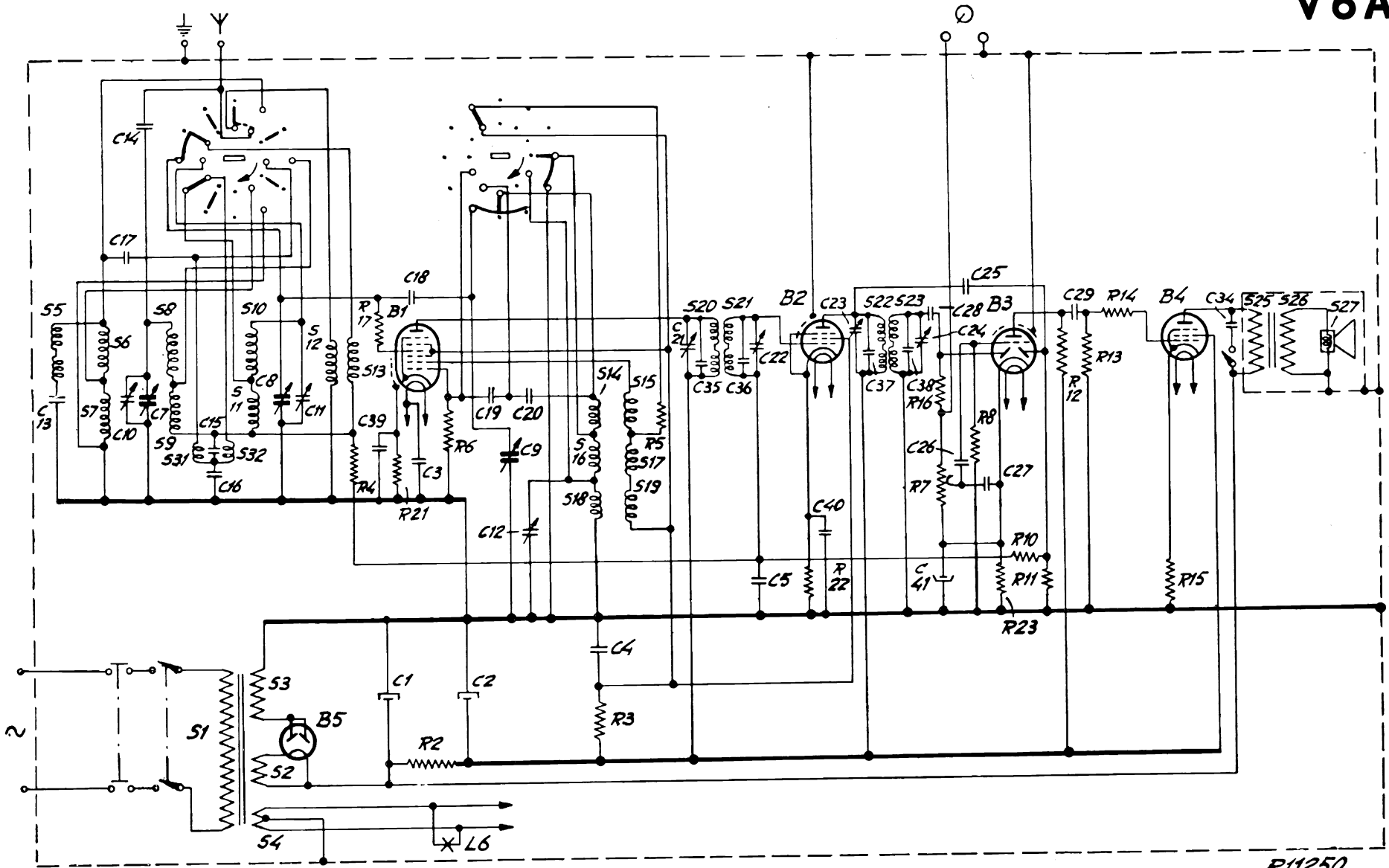
	B1	B2	B3	B4	B5	
	AK 2	AF 3	ABC 1	AL 4	AZ 1	
Va	230	230	60	246		V
-Vg1	—	2,8	—	0		V
Vg2	80	80	—	225		V
Vg3+5	80	—	—	—		V
-Vg4	2,8	—	—	—		V
Ia	1,9	5,9	0,5	35		mA
Ig2	2,5	2	—	4		mA
Ig3+5	4,5	—	—	—		mA

R1	39 Ω	48 426 10/39E	C1	32 μF	28 182 40.0
R2	2000 Ω	48 468 10/2K	C2	32 μF	28 182 40.0
R3	16000 Ω	28 803 08.0	C3	10000 pF	48 751 10/10K
R4	0,1 MΩ	48 425 10/100K	C4	0,1 μF	48 751 10/100K
R5	39 Ω	48 425 10/39E	C5	0,1 μF	48 751 10/100K
R6	56000 Ω	48 425 10/56K	C6	0,27 μF	48 751 10/270K
R7	0,5 MΩ	28 811 47.0	C7	11-490 pF	
R8	0,82 MΩ	48 425 10/820K	C8	11-490 pF	28 211 891 <sup>1)2)</sup>
R9	0,27 MΩ	48 425 10/270K	C9	11-490 pF	
R10	1 MΩ	48 426 10/1M	C7	14-460 pF	
R11	0,56 MΩ	48 425 10/560K	C8	14-460 pF	28 211 940 <sup>3)</sup>
R12	0,33 MΩ	48 426 10/330K	C9	14-460 pF	
R13	0,82 MΩ	48 425 10/820K	C10	0-18 pF	
R14	0,22 MΩ	48 425 10/220K	C10	7-55 pF	28 211 86.0*
R15	120 Ω	48 426 10/120E	C11	7-55 pF	28 212 18.2
R16	0,22 MΩ	48 425 10/220K	C12	20 pF	48 429 02/90E
R17	47 Ω	48 425 10/47E	C13	90 pF	48 406 10/22E
R21	270 Ω	48 425 10/270E	C14	22 pF	48 751 10/15K
R22	270 Ω	48 425 10/270E	C15	15000 pF	48 751 10/27K
R23	3300 Ω	48 425 10/3K3	C16	27000 pF	48 406 10/47E
			C17	47 pF	48 406 10/39E <sup>3)</sup>
			C18	2 pF	28 205 88.0
			C19	700 pF	48 429 02/700E
			C19	1090 pF	48 429 02/1K09 <sup>1)2)</sup>
			C20	1490 pF	48 429 02/1K49 <sup>3)</sup>
			C20	1750 pF	48 429 02/1K75 <sup>1)2)</sup>
			C21	32 pF	28 212 06.2
			C22	32 pF	28 212 06.2
			C23	32 pF	28 212 06.2
			C24	32 pF	28 212 06.2
			C25	2 pF	28 205 88.0
			C26	10000 pF	48 751 10/10K
			C27	1000 pF	49 128 02.0
			C28	15 pF	48 406 10/15E
			C29	10000 pF	48 751 10/10K
			C33	100 pF	48 406 10/100E
			C34	22000 pF	48 751 10/22K
			C35	155 pF	48 429 05/155E
			C36	165 pF	48 429 05/165E
			C37	155 pF	48 429 05/155E
			C38	165 pF	48 429 05/165E
			C39	47000 pF	48 751 10/47K
			C40	0,1 μF	48 751 10/100K
			C41	50 μF	49 020 01.0

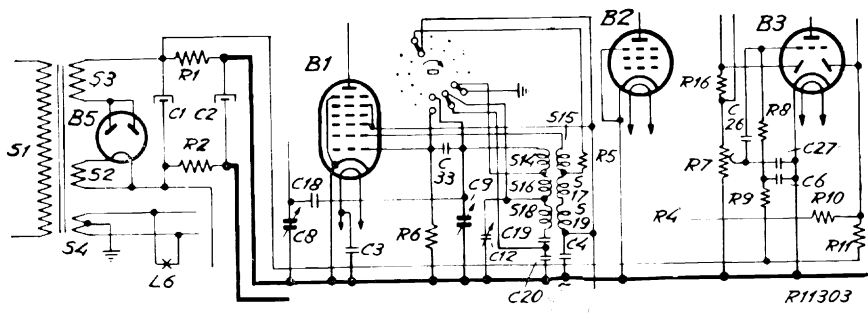
S1, S2, S3, S4	28 534 59.0	S14, S15, S16, S17,	28 587 51.0	
S5	28 587 52.0	S18, S19		
S6, S7, S8, S9	28 571 36.0	S20, S21		28 587 77.1
S10, S11, S12, S13	28 571 35.1*	S22, S23		28 587 81.0
		S25, S26		28 526 94.0
		S27		28 220 43.1
		S31, S32	28 587 69.0	

1) V6A  
2) V6A-06  
3) V6A-20

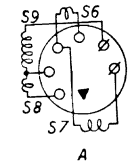
- AK2
- 53
- B1
- AF3
- 42
- B2
- ABC1
- 35
- B3
- AL4
- 40a
- B4
- AZ1
- 61
- B5



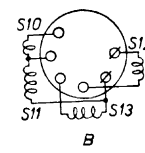
R11250



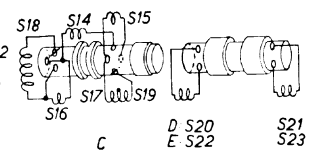
R11303



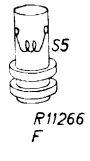
A



B



C



D

E

F